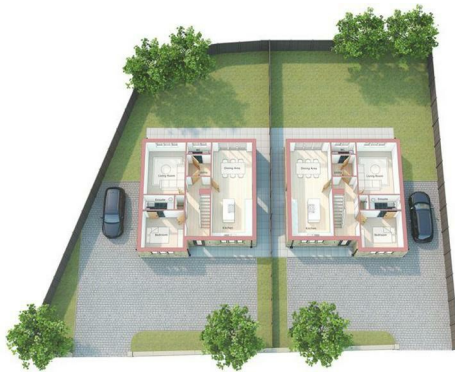


10 Windmill Hill Lane,
Emley Moor HD8 9TA

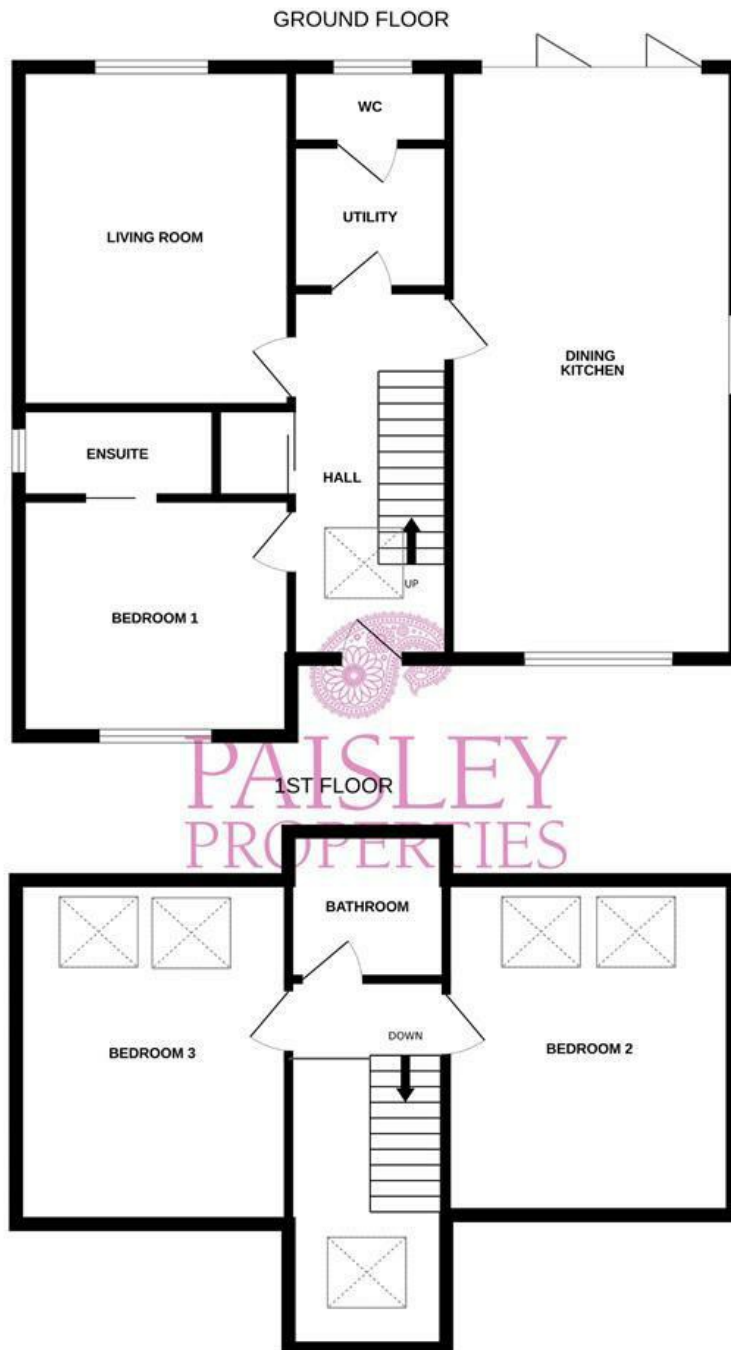
OFFERS AROUND
£450,000



THIS THREE BEDROOM DETACHED NEW BUILD PROPERTY HAS A PRIVATE DRIVE
AND IS POSITIONED IN A SUPERB LOCATION WITH FAR REACHING VIEWS.

FREEHOLD / COUNCIL TAX BAND: TBC / ENERGY RATING: TBC

PAISLEY
PROPERTIES



Whilst every attempt has been made to ensure the accuracy of the floorplan contained here, measurements of doors, windows, rooms and any other items are approximate and no responsibility is taken for any error, omission or mis-statement. This plan is for illustrative purposes only and should be used as such by any prospective purchaser. The services, systems and appliances shown have not been tested and no guarantee as to their operability or efficiency can be given.
Made with Metropix ©2024

Energy Efficiency Rating		Environmental Impact (CO ₂) Rating			
	Current	Potential		Current	Potential
Very energy efficient - lower running costs					
(92 plus) A			(92 plus) A		
(81-91) B			(81-91) B		
(69-80) C			(69-80) C		
(55-68) D			(55-68) D		
(39-54) E			(39-54) E		
(21-38) F			(21-38) F		
(1-20) G			(1-20) G		
Not energy efficient - higher running costs					
England & Wales		EU Directive 2002/91/EC	England & Wales		EU Directive 2002/91/EC

www.paisleyproperties.co.uk

Skelmanthorpe Office:
17 Commercial Road,
Skelmanthorpe, HD8 9DA
t: 01484 443893

Almondbury Office:
75-77 Northgate,
Almondbury, HD5 8RX
t: 01484 443922

Mapplewell Office:
4 Blacker Road,
Mapplewell, S75 6BW
t: 01226 395404

PAISLEY
PROPERTIES